

INSTRUMENT APPROACH CHART - ICAO

LIVERPOOL

21
090°

35
270°

31
080°

29
080°

MSA 25NM NDB(L) LPL

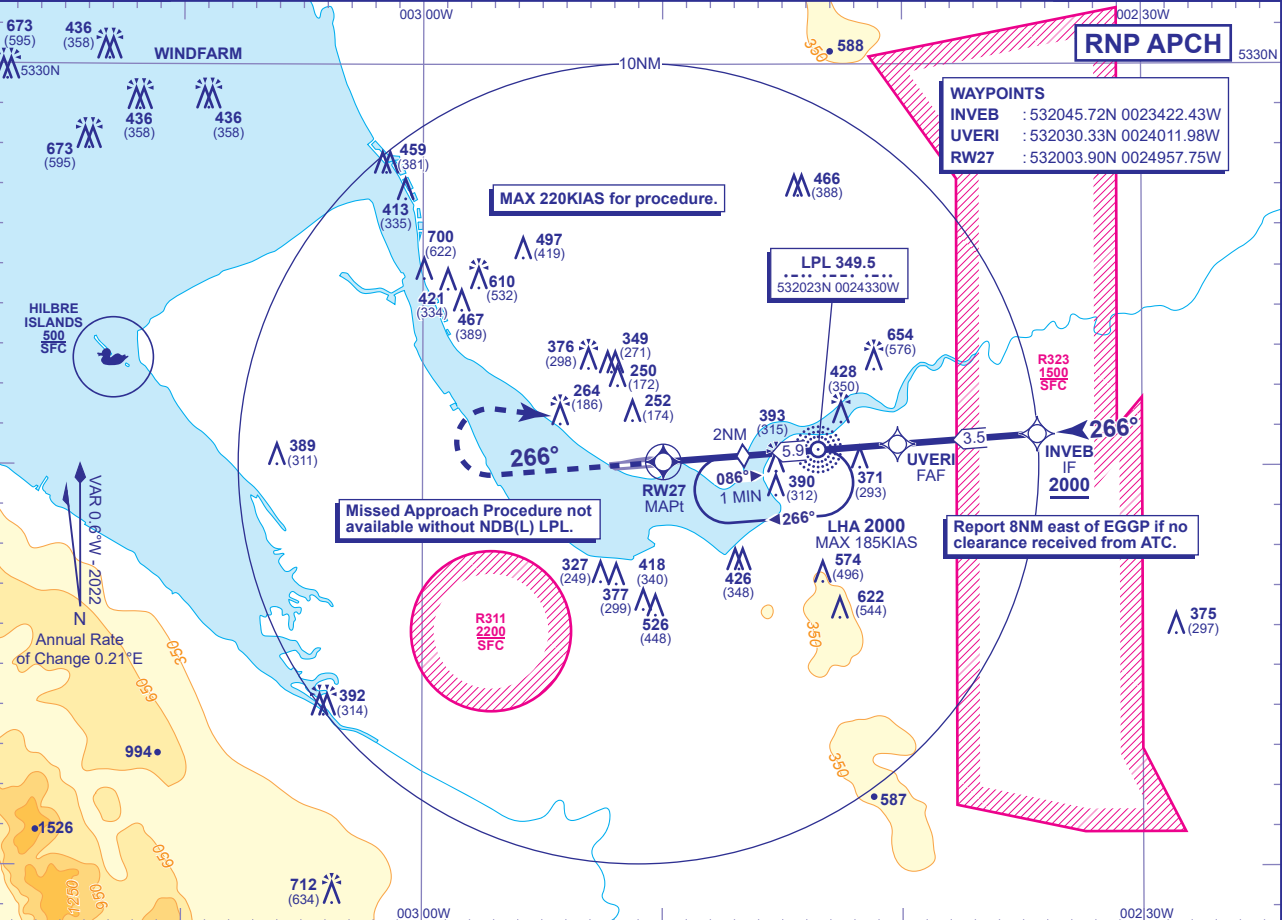
APP	119.855	LIVERPOOL APPROACH	AD ELEVATION	81
TWR	126.355	LIVERPOOL TOWER	THR ELEVATION	78
	121.955	LIVERPOOL GROUND	OBSTACLE ELEVATION	712 AMSL (634) (ABOVE THR)
RAD	118.455, 119.855	LIVERPOOL RADAR		
ATIS	124.330	LIVERPOOL INFORMATION	BEARINGS ARE MAGNETIC	

MIN TEMP -15°C

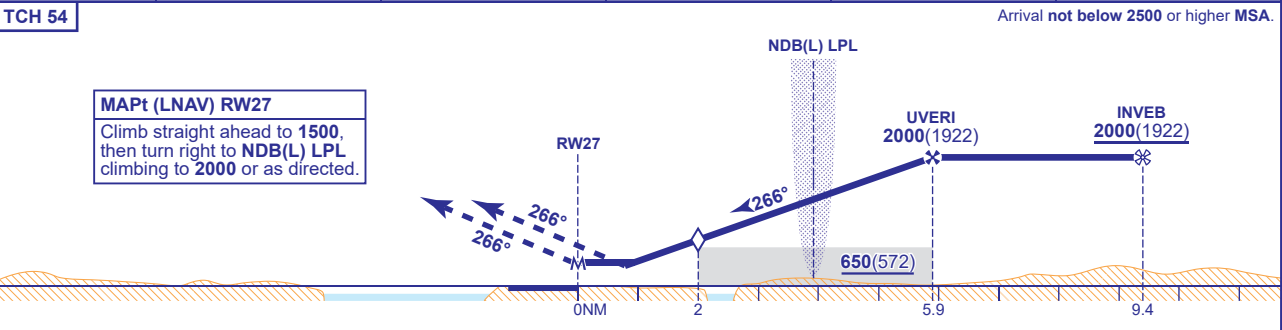
TRANSITION ALTITUDE 5000

RNP RWY 27
(ACFT CAT A,B,C,D)

WAYPOINTS
INVEB : 532045.72N 0023422.43W
UVERI : 532030.33N 0024011.98W
RW27 : 532003.90N 0024957.75W



RECOMMENDED PROFILE VERTICAL PATH ANGLE 3.0° (LNAV 5.2%), 320FT/NM					
NM to RW27	5	4	3	2 (SDF)	1
ALT(HGT)	1720(1642)	1400(1322)	1090(1012)	770(692)	450(372)



Aircraft Category		A	B	C	D	Rate of descent	G/S KT	160	140	120	100	80
OCA (OCH)	LNAV/VNAV	390(312)	390(312)	390(312)	390(312)		FT/MIN	850	740	640	530	420
	LNAV	460(382)	460(382)	460(382)	460(382)							
VM(C)OCA (OCH AAL)		Total Area	550(469)	670(589)	930(849)	970(889)						

NOTE 1 Missed approach shall be converted to a conventional missed approach upon reaching 1500.
2 Procedure is only available when Liverpool RADAR is operational.
3 Pilots to request RNP approach on first call.